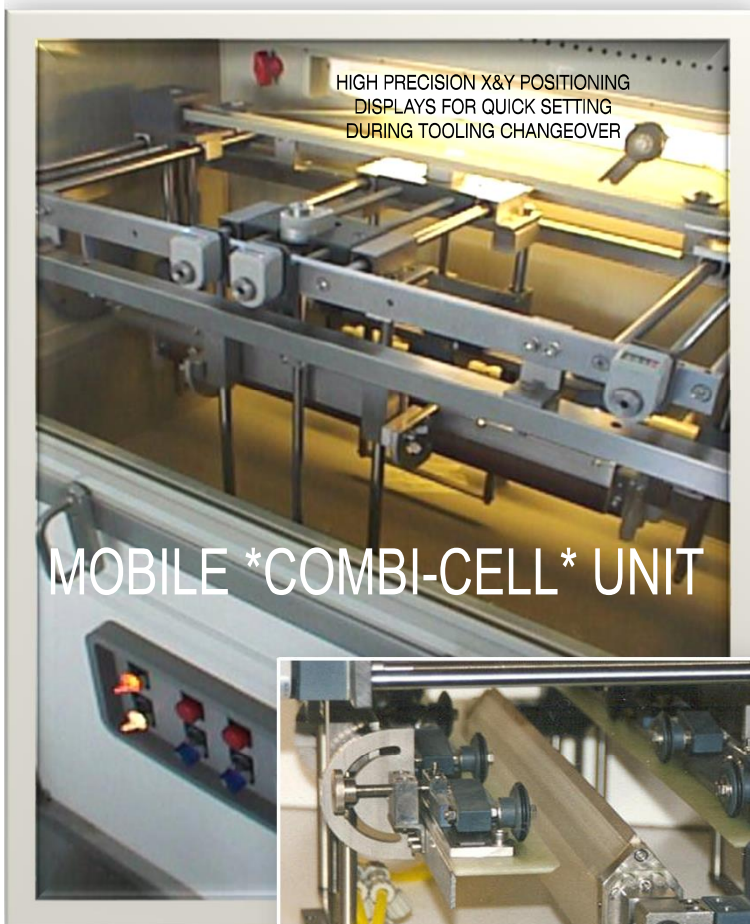


The COMBI-CELL unit

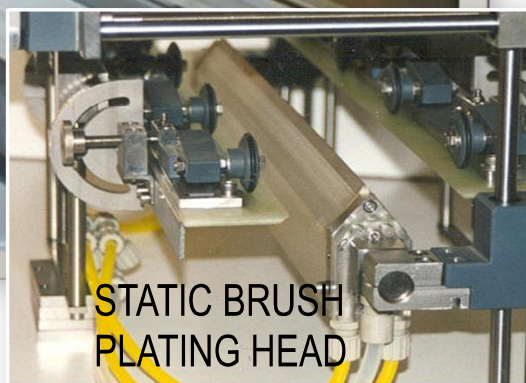
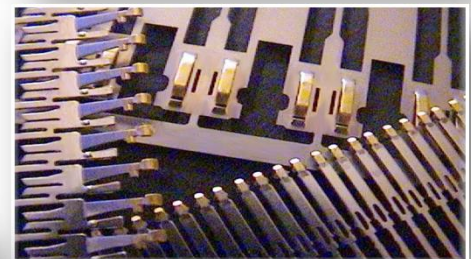


The ***COMBI-CELL*** is a flexible plating unit for the production of various kind of connector terminals, which require high **PLATING SELECTIVITY** and **QUICK TOOLING CHANGEOVER TIME**. The COMBI-CELL is a basic cell set with a high precision positioning mechanism to guide the connector strip and to located precisely the plating head.

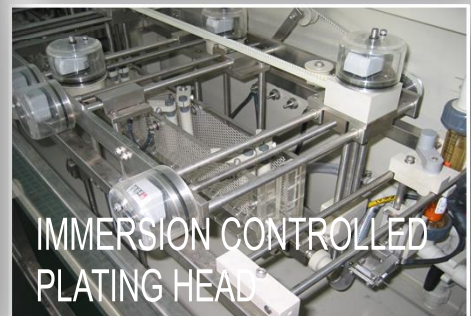
The COMBI-CELL is available with a wide range of **INTERCHANGEABLE** plating heads, such as the well known **STATIC BRUSH PLATER (SBP)** including its unique **SOLUTION VACUUM SYSTEM**, as well as the **IMMERSION CONTROLLED HEAD (CIC)**, the **SIDE WAVE CASCADE HEAD (SWC)** and many other custom designed plating heads.



MOBILE *COMBI-CELL* UNIT



STATIC BRUSH PLATING HEAD



IMMERSION CONTROLLED PLATING HEAD



A GUARANTEE FOR SUBSTANTIAL SAVING OF PRECIOUS METAL

ELECTROPLATING ENGINEERING for SELECTIVE APPLICATIONS

EESA 4 Chemin de la Crétaux - 1196 Gland - Switzerland

TEL : ++41 (0)79 467 11 92 E-MAIL : eric.zwerner@eesa.ch

Equipment manufactured in Switzerland by **STS Industrie S.A.**

www.stsindustrie.ch

